



HEALTH
Parks, Recreation and Trails

CFS
cfse.com
ENGINEERS

Lake Shawnee

This park is used for picnics, weddings, sporting events, equestrian use and many other types of outdoor activities. CFS provided surveying and design for the trail, parking lots, structural design for a trailhead building, two bridges, and water / sewer lines along West Edge Road, bidding services, construction administration, construction inspection, and construction staking throughout the construction and final acceptance of the project. Shown below is one of the beautiful pedestrian bridges constructed over the lake



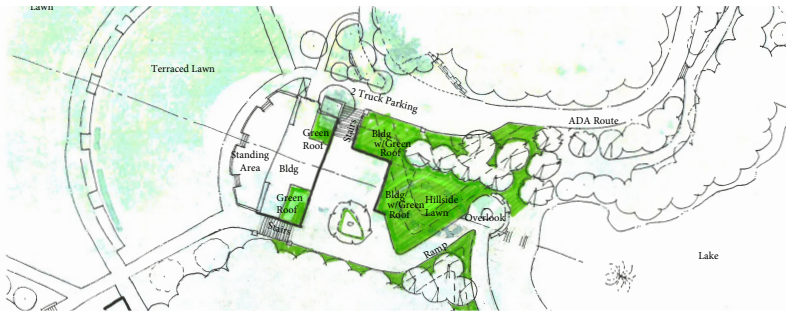
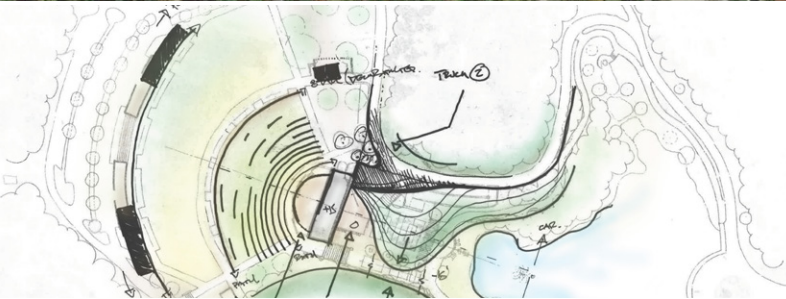


WHO WE ARE

CFS is a full-service consulting firm that provides professional engineering, recreation, landscape architecture and multi-modal transportation services throughout the Midwest. Our staff of over 90 professionals offers client-focused solutions for public infrastructure, private development, structural, geotechnical and survey projects. As a medium sized firm, we maintain stability, constantly push the state-of-art, while always focused on our core values of service and project quality. We consider it a privilege to have partnered with hundreds of communities and clients for the past half-century.

Krug Park Design

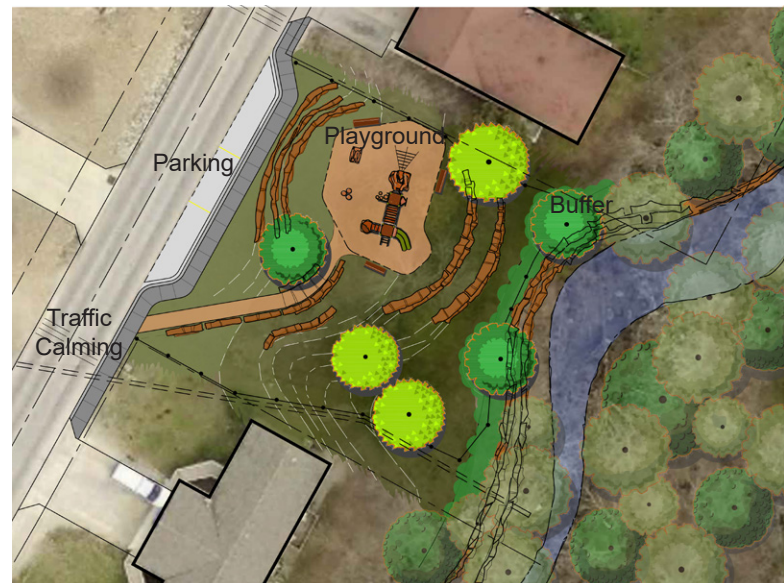
Located in St. Joseph, Missouri, this beautiful and vibrant 163-acre public park opened in 1902. The park features Italian renaissance structures (including an Italian castle), an amphitheater, rose gardens, picnic areas, walking trails and playgrounds. It also houses a North American native animal exhibit with buffalo, deer and longhorn cattle. CFS is working with the city to update the amphitheater into a multi-million dollar venue hosting large music events for audiences as large as 15,000 people.



© Hufft Projects

Kimberling City Master Plan

The Parks and Recreation Master Plan completed in 2019 guides future investments and strategies over the next five years, shaping the delivery of services in a manner that is consistent with the City's sustainability goals and that meets the community's values of protecting resources, providing health and wellness opportunities, and creating safe recreation places for all users. Shown here is the conceptual design for two new parks - a neighborhood park and city park.



WHAT WE DO

Civil Engineering
Site Development
Transportation Planning and Engineering
Traffic Analysis and Engineering
Landscape Architecture
Environmental Planning
Utility Coordination
Bridge Design and Inspections
Park and Recreation Facilities
Electrical Engineering
Wastewater Planning and Design
Sewage Collection and Treatment
Water Treatment and Distribution
Surveying
GIS Mapping
Geotechnical Engineering and Testing
Cost Estimation
Lake and Dam Design and Restoration
Streambank Stabilization
Construction Inspection

T.B. Hanna Station Park

CFS worked with the City of Raymore to master plan their newest park located in the original town and home to the Original Town Farmer's Market, the Depot shelter facility, the Raymore Honor Brick program and many community events. CFS master planned and designed improvements for this park including the first all-inclusive sprayground in the State of Missouri, restroom/concession/pump house facility, ice rink, renovated historic post office, playground and trail system.



VISION-LED PLANNING & PRIORITY SETTING

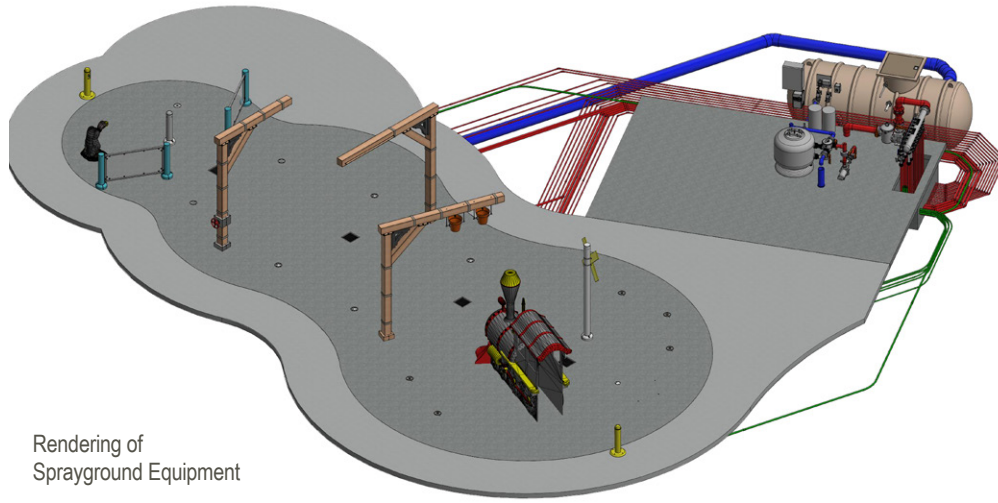
At the core of our parks and recreation work is the philosophy that successful projects are led by a shared community vision. We are regularly tasked with incorporating the perspectives of various stakeholders - citizens, government, regulatory agencies, and special interest groups - into our projects to achieve the highest mutual benefit to all involved. We are committed to bringing individuals together so that all “voices” are heard and realized.

CREATIVITY IN DESIGN

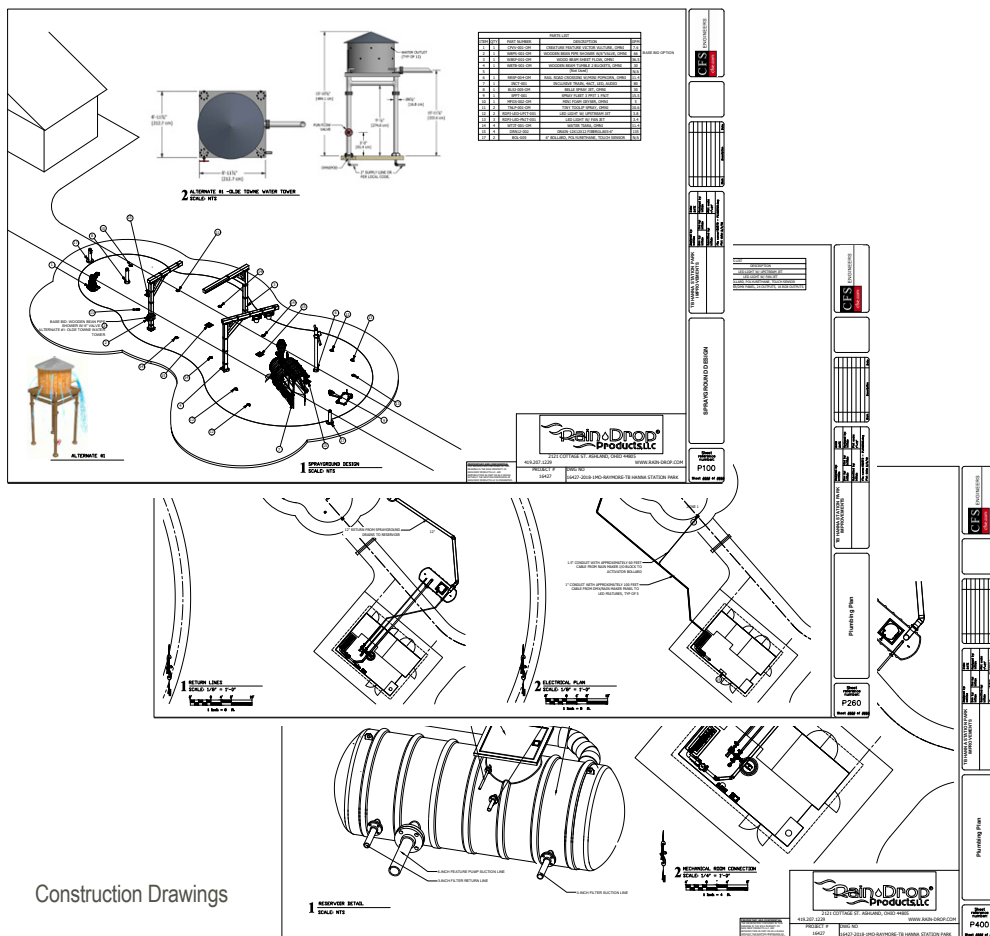
CFS strives to bring beauty and authenticity to every place. Our designs account for the needs and wants of the citizens which results in more active lifestyles. By incorporating outdoor gathering areas and gateway features, we take a normal gray infrastructure project and adapt technology and green practices to expand the area’s feeling of vibrancy. We have been recognized by our clients, our peers, and the people who visit our designed parks and recreation spaces for our creativity that has helped elevated the status of the community.

PARKS AND RECREATION DESIGN

The Site Development Division of CFS provides planning and design services preserving or developing community open space including parks, trails, recreation facilities, wetlands and environmentally sensitive areas. We help communities prepare park master plans providing a common vision for implementing improved park services, programs, and new facilities. As a result of extensive infrastructure analysis and collaboration with public interests and user groups, we help establish long-term strategies to create livable environments for its people, now and in the future.



Rendering of
Sprayground Equipment



Construction Drawings

RECREATIONAL TRAILS & MULTI-MODAL CONNECTIONS

CFS has designed over 300 miles of trails and bikeways in addition to many multi-use pathways within parks and sports complexes. From master planning to final plans, our trails match the desires of the community while enhancing quality of life and connections between recreational facilities, local businesses, community event spaces, and parks. We design for the convenience and safety of the trail user which leads to a reduction in automobile traffic, a reduction in air and noise pollution, and the creation of a sustainable, healthy, and friendly environment.

LANDSCAPE ARCHITECTURE

CFS offers an expertise in site selection, master planning, landscape architecture and detailed site design blurring the relationship between indoor and outdoor environments, while minimizing the environmental impact. Through an evaluation process, we investigate opportunities to create unique and memorable places that are healthy, efficient and responsive to the client's and user's needs. Our vast design experience ranges from park and urban plaza design to fountain, lighting, trail crossings, and wayfinding signage design.

ENVIRONMENTAL MITIGATION

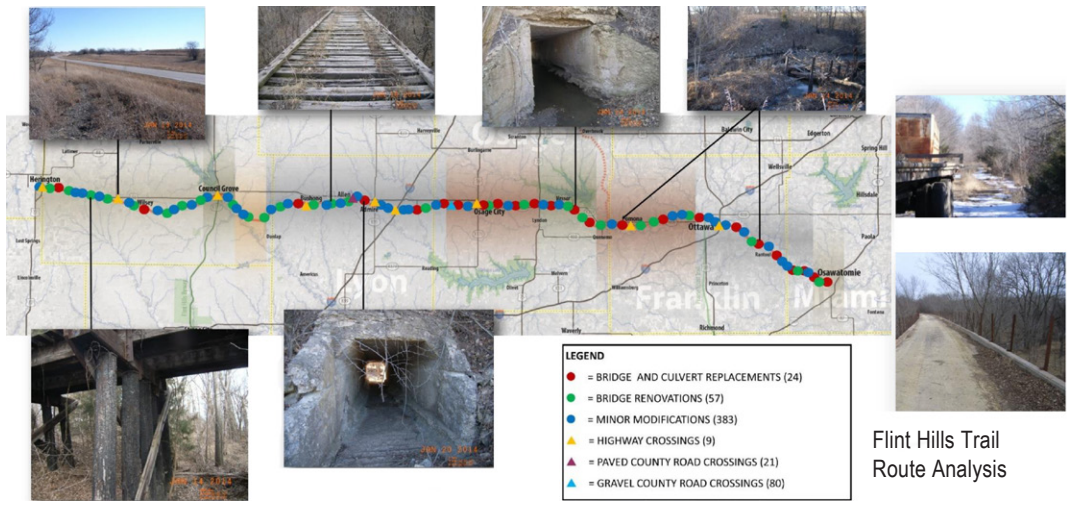
CFS provides design for ecological restoration projects for environmental mitigation and habitat enhancement. We strive to acknowledge the existing ecological processes affecting the site and to employ proper design solutions to establish self-sustaining stream, riparian, and wetland systems with minimal need for post-construction maintenance.



Bledsoe Ferry Trail



Phase II Riverwalk



Flint Hills Trail
Route Analysis

DESIGNING FOR ADA STANDARDS

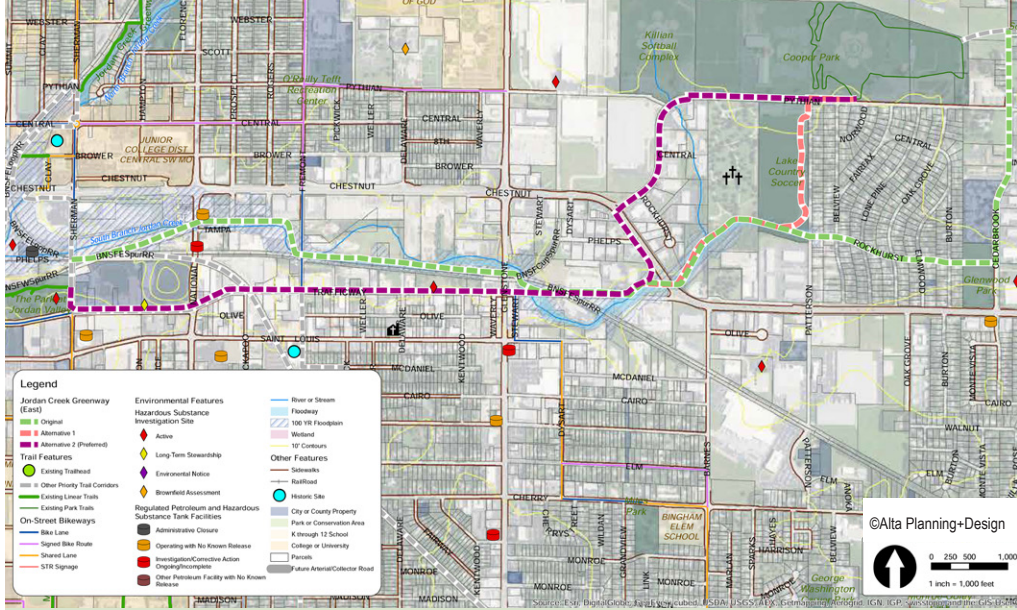
Good design is accessible to every member of the community. By integrating this simple philosophy in the conception and development of our projects, we inconspicuously invite every community member to enjoy our completed projects. CFS design staff are educated in the interpretation of the Americans with Disabilities Act as well as regularly apprised of all updates, ensuring that ADA standards and regulations are seamlessly included in our overall design, concepts and details.

GEOGRAPHIC INFORMATION SYSTEMS (GIS)

CFS provides services in mobile data collection, map creation and data-base management and training for implementing and integrating solutions with GIS, GPS, and imagery. We develop solutions for communities that are designed to capture, analyze, and manage geospatial data. Using ArcGIS software, we are skilled in site analysis, infrastructure planning, and map creation.

INNOVATIVE FUNDING AND PROJECT DEVELOPMENT

We know that many cities, counties and agencies move forward with planning and in many cases, don't have the answers with how to ultimately fund their desired improvements. CFS has over twenty years of experience helping communities move projects from a vision to reality. Our team has experience analyzing existing revenue streams, recommending efficiency measures and identifying new funding sources, both public and private.



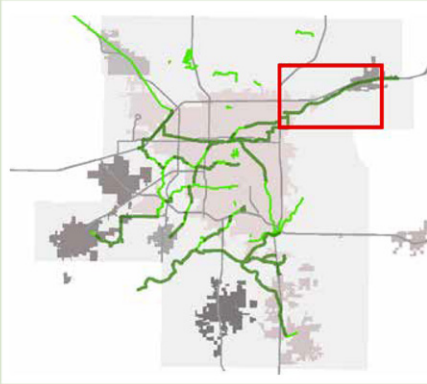
Ozark Transportation Organization Trail Investment Study

CFS completed a trail investment study with Alta Planning+Design connecting three counties and nine cities. CFS examined key corridor characteristics, developed alternative and interim alignments where feasible, and identified a preferred final alignment for each of the individual priority trail corridor segments. The final report described the process for the development and scoring of alignment alternatives, ultimate selection of preferred, refined trail alignments, typical cross sections, and cost estimate for each trail segment.

Alignment Scoring

Score	Priority	Original
Network Connections	High	●
User Experience	High	●
Enhances Bicycling & Walking	High	●
Logical Segments	Medium	○
Cultural & Natural Resources	Medium	●
Environmental Conditions	Medium	●
Cost	Low	●
Route Directness	Low	●
Ownership / Right-of-Way	Low	●

Planning level cost for preferred alignment: \$8,953,000.



Route 66 Trail (Stafford Trail) Priority Trail Segment

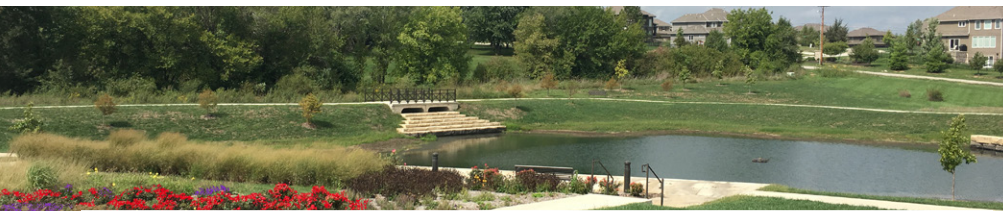


ATHLETIC FIELD DESIGN

As a recognized expert in athletic field design, CFS works with stakeholders, coaches and groundskeepers to design fields, courts, shelters, play areas, signage, furnishings and equipment. Our goal is to design each field or amenity with safety, durability and aesthetic in mind while consciously working with your budget to achieve the highest quality possible. As civil engineers and landscape architects, we specialize in layout and drainage to maximize opportunities and accommodate adjoining facilities and amenities.

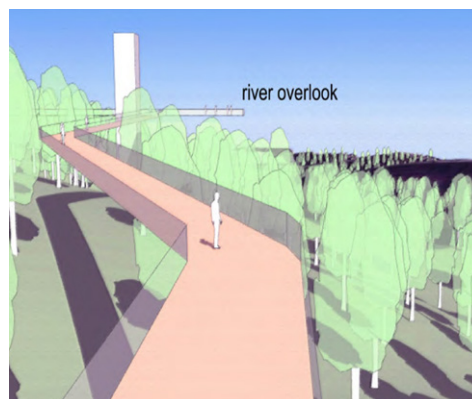
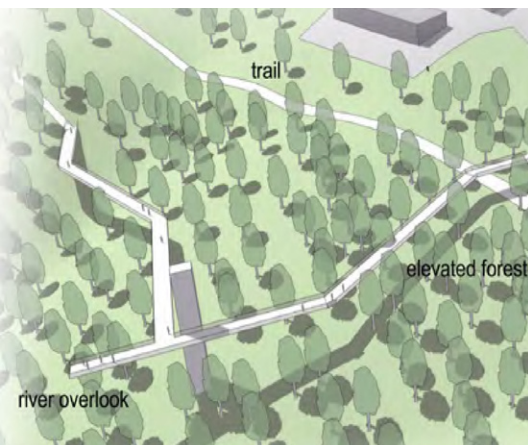
CONSTRUCTABILITY & COST ESTIMATING

With extensive knowledge of the local construction industry, CFS provides the most accurate and real-time construction cost estimates. Throughout the entire project process we constantly attempt to remove the potential for unknown factors that would tend to raise contractor's bids. Each of our projects also goes through a review for constructibility and value engineering. This practice has proven invaluable on many past projects by ensuring that CFS designs are constructible, cost efficient and prove to be the best, most common sense solution to the challenge at hand.



Erfurt Park

This 20-acre recreational complex includes soccer fields, walking trails, pond, and European style gardens. The facility included picnic shelters and restrooms with water and indoor plumbing. Playground areas and scenic garden vistas abound in the park, along with environmentally sensitive features for treating stormwater pollutants from the proposed parking areas.



SUSTAINABILITY

CFS Engineers recognizes the reality of limited natural resources within our projects and seek opportunities to implement sustainable practices within every one of our projects. Our concept of site development starts first with the protection of natural resources (trees, waterways and other green spaces) as the underlying foundation that sustains life and enables economic development. These resources must be protected, maintained and preserved. Within our typical design approach is the evaluation of alternatives to greening the built environment — effectively softening the lines between the human-made and natural environments. We create parks, recreation areas, urban plazas and site developments that serve human needs, protect environmental quality, and restore ecological systems at the same time.

The CFS Engineers approach to sustainable design includes:

- Advocating economic approaches within design that recognize natural resources as capital assets;
- Promoting multidisciplinary, whole system, integrated, and multi-objective goals in all phases of project planning, design, construction, and operations;
- Practicing what we preach with our own firm's energy and material conservation.

MORE THAN MEETS THE EYE

We are more than just an engineering firm. Our team includes dynamic professionals passionate about tackling challenges and generating real-world, common sense solutions. CFS integrates a broad range of services within one organization offering comprehensive approaches to clients.

**We're not just an engineering firm;
we're an extension of your values
and hard work.**



One Vision. One Team. One Call.



ENGINEERS

OFFICE LOCATIONS

Kansas City, Missouri
Kansas City, Kansas
Jefferson City, Missouri
Lawrence, Kansas
Springfield, Missouri
Topeka, Kansas
Horton, Kansas